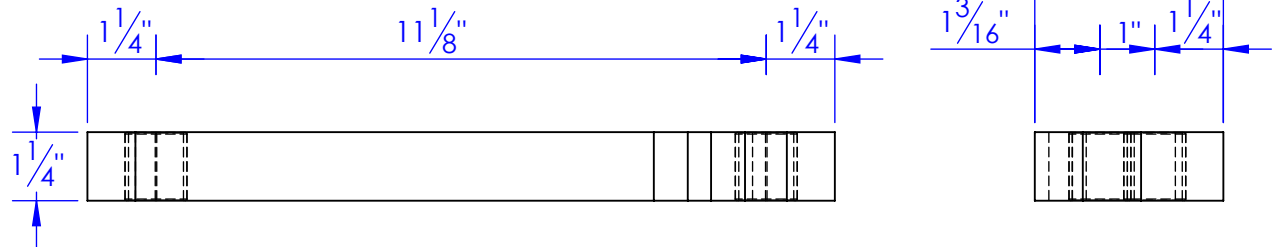
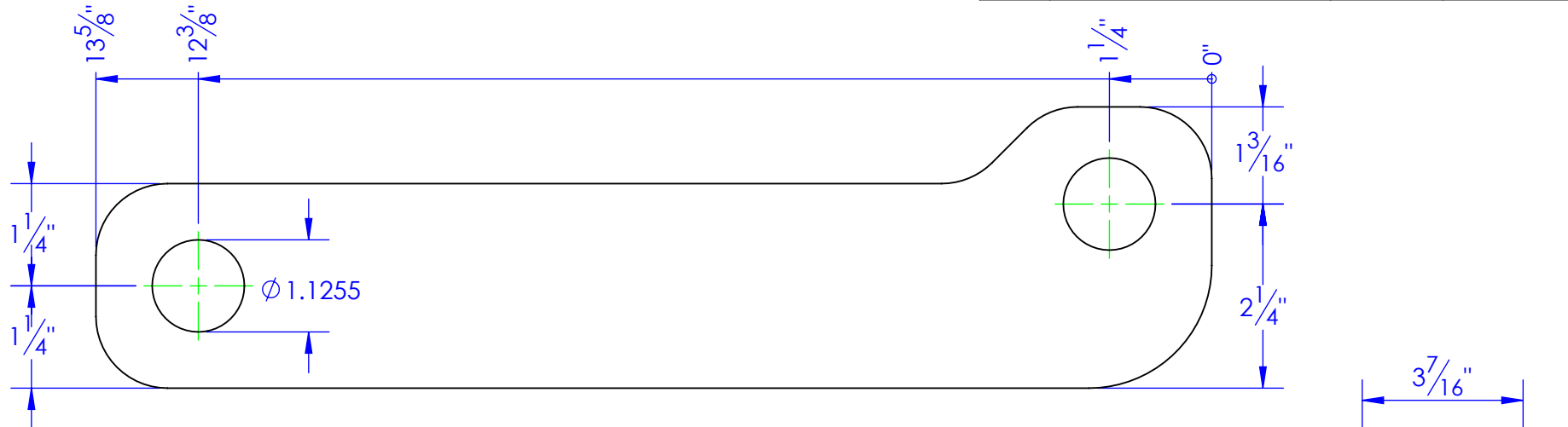


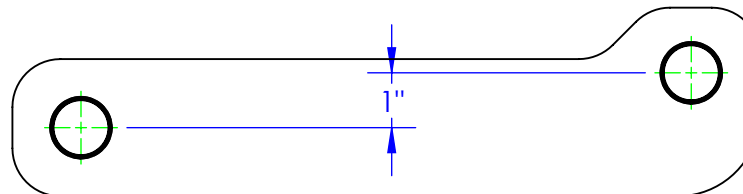
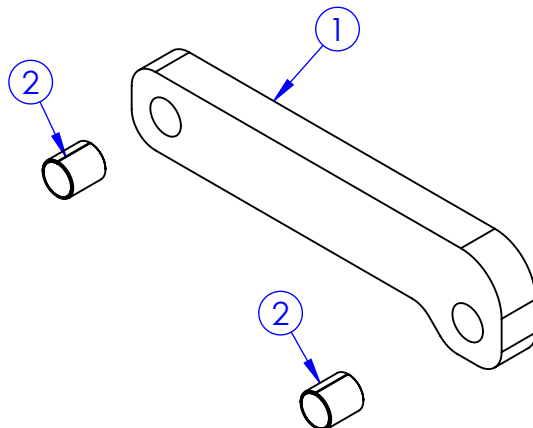
ITEM NO.	PART NUMBER	DESCRIPTION	MATERIAL	QTY.
1	FP-LBX0-1000 OFFSET	LINKAGE BAR (1-1/4) OFFSET, HYDRA BED	1-1/4" HRS	1
2	HD-16TU20	DU BUSHING	STOCK	2

REVISIONS			
REV.	DESCRIPTION	DATE	APPROVED
A	INITIAL RELEASE	3/6/2014	
B	CHANGE HOLE SIZE AND BUSHINGS	11/6/2017	



SEE DWG # 10-1407 C

July 2011 through July 2012 Rear assemble block FI 1x1-1/4 L 2-1/2 was welded incorrectly. Arms to ground distance was compromised.



RE-LB-125 OFFSET

**PROPRIETARY AND CONFIDENTIAL**  
THE INFORMATION CONTAINED IN THIS DRAWING IS THE SOLE PROPERTY OF TRIPLE C INC. ANY REPRODUCTION IN PART OR AS A WHOLE WITHOUT THE WRITTEN PERMISSION OF TRIPLE C INC. IS PROHIBITED.

DIMENSIONS ARE IN INCHES TOLERANCES: FRACTIONAL $\pm 1/16$ ANGULAR: MACH $\pm 1$ BEND $\pm$ TWO PLACE DECIMAL $\pm 010$ THREE PLACE DECIMAL $\pm 005$	
MATERIAL	--
DO NOT SCALE DRAWING	

NAME	DATE
DRAWN HEATH	11/6/2017
PART #	
ASM #	RE-LB-125 OFFSET
COMMENTS: MAIN LINKAGE BAR, 1-1/4" OFFSET, HYDRA BED	

P.O. BOX 248,  
SABETHA, KS 66534

**TRIPLE C**  
INC.

SIZE <b>A</b>	DWG. NO. <b>10-1713 B</b>	REV. <b>B</b>
SCALE: 1:3.5	WEIGHT: 12.01	SHEET 1 OF 1